

Raffle 3  
tickets for \$10  
Fabulous  
prizes

# Swan View & Districts AGRICULTURAL & ARTS SOCIETY (INC.)

Raffle draw  
12 noon  
Prize winners  
must be  
present

## 70<sup>th</sup> Anniversary Show

Official and Encouragement Horses in Action

13th October 2018

Venue: The Swan Valley PC at the SEC

Gates open 6.30am

EWA, SHCWA, RAS, AHHA Qualifier

Pre-entries only – Closing date 11<sup>th</sup> October 2018 5pm

**\*\*No entries on the day\*\***

Judges

Official Ponies: Wendy Barker

Official Hacks: Margaret Thwaites

Encouragement: (W/T & W/T/C) Elouise Ford

All rings to start at 8.30 sharp

Ground Jury: Nicole Cykhoma, Shush Kingham

Raffle tickets from Kay Woodward, 9-11.45am

Garlands for ALL Champions (Excludes OTT)

Garlands made by Penrose Park Garlands



Catering by The Cheeky Sausage



Photography by Sonny Rutherford



Enquiries: Caroline van Niekerk, Email: [carovan47@bigpond.com](mailto:carovan47@bigpond.com)

Or call 9571 3699, leave a message

## **EMERGENCY PROCEDURES**

Please read these instructions carefully.

1. In the event of a loose horse/rider down you will all be expected to come to a halt – ALL RINGS - until the loose horse has been caught.
2. Once the horse has been caught you will be permitted to WALK your horse until the fallen rider has been attended to.
3. Should the rider need medical attention from ambulance officers an ambulance will be called.
4. At the discretion of the judges all rings may recommence competition but may be interrupted again as the ambulance attends.

### **IN THE CASE OF THE MEDEVAC HELICOPTER BEING REQUIRED**

**You will be advised by PA system that a medevac is required**

1. All competitors will be required to dismount and loosen girths.
2. Connections to competitors if not already on ground will be asked to make their way to the ring/s entry/exit gate in readiness to assist the competitor.
3. Evacuation is to the yards taking the first available yard, will be at the walk in single file.

**First**, anyone in the warm up areas (8A and 9)

**Second**, the Encouragement ring (8) and the Arab ring (12)

**Third**, Official hacks (10) and then Official ponies (11)

We do not want a bottle neck or panic at the gateway.

**Bring food/hay/water but please remain at the yard with your horse until this incident is over.**

Competition will recommence once the emergency is over. Judges will allow a 15 minute warm-up period before calling classes.

Should this incident have upset you/your horse to the extent that you are unable to participate in any further competition, advice in writing on the day will see entry fees re-funded on a pro-rata basis.

## Encouragement Ring

Walk/Trot followed by Walk/Trot/Canter

Judge: Elouise Ford

Penciller: Charlotte Mazzeo

**Ring One 8.30am start**

**Champion Garlands sponsored by B&R Contracting, Bullsbrook Produce, City Livestock, Fly n High, Stunning Stocks, Swan View Agricultural & Arts Society, TGA Pallets, The Horse Herbalist, The Gordon Family.**

1. Best presented leading rein under 14hh
2. Leading rein rider 12 years & Under
3. Leading rein Pony 12.2hh & Under
4. Leading rein Pony over 12.2hh & under 14hh

**Champion & Reserve Champion Lead Rein Pony (to be taken from classes 3 & 4)**

### Walk/Trot Classes

5. Best presented (All heights)

6. Rider 12 years & under
7. Rider 13 to 17 years
8. Rider 18 to 25 years
9. Rider 26 years & over

**Champion & Reserve Champion Walk/Trot Junior Rider**

**Champion & Reserve Champion Walk/Trot Senior Rider**

10. Pony 12.2hh & under
11. Pony over 12.2hh up to & including 14hh
12. Galloway over 14hh up to & including 15hh
13. Hack over 15hh up to & including 16hh
14. Hack over 16hh
15. Lightweight pony 14hh & under
16. Medium/heavyweight pony 14hh & under
17. Lightweight Galloway over 14hh up to & including 15hh
18. Medium/heavyweight Galloway over 14hh up to & including 15hh
19. Lightweight Hack over 15hh
20. Medium/heavyweight Hack over 15hh
21. Girls/Ladies pony 14hh & under
22. Boys/Gents pony 14hh & under
23. Girls/Ladies Galloway over 14hh up to & including 15hh
24. Boys/Gents Galloway over 14hh up to & including 15hh
25. Girls/Ladies Hack over 15hh
26. Boys/gents Hack over 15hh

**Champion & Reserve Walk/Trot Pony Hack**

**Champion & Reserve Walk/Trot Galloway**

**Champion & Reserve Walk/Trot Hack**



**Angela Davison**

Qualified Medical Herbalist

Equine Herbal Specialist

Member, A.T.M.S

■ [angela@thehorseherbalist.com](mailto:angela@thehorseherbalist.com)

■ [www.thehorseherbalist.com](http://www.thehorseherbalist.com)

*Your Horse's Health is Our Business!*

## Encouragement Ring

### Walk/Trot/Canter Classes

27. Best presented (All heights)

28. Rider 12 years & under

29. Rider 13 to 17 years

30. Rider 18 to 25 years

31. Rider 26 years & over

**Champion & Reserve Champion Walk/Trot/Canter Junior Rider**

**Champion & Reserve Champion Walk/Trot/Canter Senior Rider**

32. Pony 12.2hh & under

33. Pony over 12.2hh up to & including 14hh

34. Galloway over 14hh up to & including 15hh

35. Hack over 15hh up to & including 16hh

36. Hack over 16hh

37. Lightweight pony 14hh & under

38. Medium/heavyweight pony 14hh & under

39. Lightweight Galloway over 14hh up to & including 15hh

40. Medium/heavyweight Galloway over 14hh up to & including 15hh

41. Lightweight Hack over 15hh

42. Medium/heavyweight Hack over 15hh

43. Girls/Ladies pony 14hh & under

44. Boys/Gents pony 14hh & under

45. Girls/Ladies Galloway over 14hh up to & including 15hh

46. Boys/Gents Galloway over 14hh up to & including 15hh

47. Girls/Ladies Hack over 15hh

48. Boys/Gents Hack over 15hh

**Champion & Reserve Walk/Trot/Canter Pony Hack**

**Champion & Reserve Walk/Trot/Canter Galloway**

**Champion & Reserve Walk/Trot/Canter Hack.**

**Fly n High**  
"Sewing your dreams into reality"  
T: 9571 2662  
M: 0437 316 149  
Michelle Walther  
100 Meadowbrook Ramble  
Bullsbrook Perth WA 6084  
Email: waltherfamily1@bigpond.com  
Web: flynhighhorsewear.com.au

**CITY LIVESTOCK**  
727a Gnarara Road Lexia WA 6079  
Tel: 9302 3027 Fax: 9309 4607  
www.citylivestock.com.au  
sales@citylivestock.com.au  
Peter & Gail

**TGA**  
PALLETS  
Email: enquiries@tgapallets.com.au

**REPAIRED & SERVICED BY:**  
**B&R**  
bandrcontracting@bigpond.com  
M: 0408 989 354



**bullsbrook**  
PRODUCE CO  
2395 Great Northern Hwy  
Bullsbrook 6084 WA  
PO Box 313  
Bullsbrook 6084 WA  
For all your pet & stock needs  
- animal health products  
- kleenheat gas  
Email: bullsbrookproduce@bigpond.com





Judge: Wendy Barker  
Penciller: Jessica Salloway

Ring Two 8.30 start

Champion garlands sponsored by Brigadoon Produce, Horseland Midland, Mohegan Training Centre, Penrose Park Garlands, Wanneroo Stockfeeders.

**SHOW PONY: -**

**Leading Rein Classes for Riders 4 years and over, up to & including 8 Years**

1. Leading Rein Smartest on Parade, pony can be 14 hands & Under
2. Leading Rein Show Pony 12 hands & Under
3. Leading Rein Show Hunter Pony 12 hands & Under
4. Leading Rein Rider, pony can be 14 hands & Under

**Champion & Reserve Leading Rein Pony (to be taken from classes 2 & 3)**

**Pony's up to & including 14 hands & for Riders 6 years & over**

5. Novice pony 12.2 & under.
6. Novice Pony over 12.2 up to & including 14 hands
7. Pony Hack 12.0 hands & Under
8. Pony Hack over 12.0 hands up to & including 12.2 hands
9. Pony Hack over 12.2 hands up to & including 13.0 hands
10. Pony Hack over 13.0 hands up to & including 13.2 hands
11. Pony Hack over 13.2 hands up to & including 14 hands
12. Lightweight Pony Hack 12.2 hands & Under
13. Lightweight Pony Hack over 12.2 hands up to & including 14 hands
14. Medium/Heavyweight Pony Hack 12.2 hands and Under
15. Medium/Heavyweight Pony Hack over 12.2 hands up to & including 14 hands
16. Lady's/Girl's Pony Hack 12.2 hands & Under
17. Lady's/Girl's Pony Hack over 12.2 hands up to & including 14 hands
18. Boy's Pony Hack 14 hands & Under
19. Child's Pony Hack 12.2 hands & Under
20. Child's Pony Hack over 12.2 hands up to & including 14 hands
21. Child's Lightweight Pony Hack 14 hands & Under
22. Child's Medium/Heavyweight Pony Hack 14 hands Under

**Champion & Reserve Small Pony Hack**

**Champion & Reserve Large Pony Hack**

23. Rider up to & including 13 Years
24. Rider 14 years and over, up to & including 17 Years

**Champion & Reserve Junior Rider**

**Australian Hunter Horse Association (AHHA) Incorporated**

**Proudly Presents**

**Ribbons sponsored by AHHA. Garland sponsored by Jane Fisher & Bernie Jenkinson**

25. AHHA Show Hunter Pony
26. AHHA Show Hunter Galloway
27. AHHA Show Hunter Hack

Champion AHHA Show Hunter  
Reserve Champion Show Hunter



**SHOW HUNTER PONY: -**

- 28. Novice Show Hunter pony 12.2 & under.
  - 29. Novice Show Hunter Pony over 12.2 up to & including 14 hands
  - 30. Show Hunter Pony Hack 12.0 hands & Under
  - 31. Show Hunter Pony Hack over 12.0 hands up to & including 12.2 hands
  - 32. Show Hunter Pony Hack over 12.2 hands up to & including 13.0 hands
  - 33. Show Hunter Pony Hack over 13.0 hands up to & including 13.2 hands
  - 34. Show Hunter Pony Hack over 13.2 hands up to & including 14 hands
  - 35. Lightweight Show Hunter Pony Hack 12.2 hands & Under
  - 36. Lightweight Show Hunter Pony Hack over 12.2 hands up to & including 14 hands
  - 37. Medium./Heavyweight Show Hunter Pony Hack 12.2 hands and Under
  - 38. Medium/Heavyweight Show Hunter Pony Hack over 12.2 hands up to & including 14 hands
  - 39. Lady's/Girl's Show Hunter Pony Hack 12.2 hands & Under
  - 40. Lady's/Girl's Show Hunter Pony Hack over 12.2 hands up to & including 14 hands
  - 41. Boy's Show Hunter Pony Hack 14 hands & Under
  - 42. Child's Show Hunter Pony Hack 12.2 hands & Under
  - 43. Child's Show Hunter Pony Hack over 12.2 hands up to & including 14 hands
  - 44. Child's Lightweight Show Hunter Pony Hack 14 hands & Under
  - 45. Child's Medium/Heavyweight Show Hunter Pony Hack 14 hands Under
- Champion & Reserve Small Show Hunter Pony Hack**  
**Champion & Reserve Large Show Hunter Pony Hack**



**WANNEROO**  
STOCKFEEDERS

**Judge: Margaret Thwaites**

**Penciller: Janet Barlow**

**Ring Three. 8.30 start**

**Champion Garlands sponsored by Equine Technology.**

**GALLOWAY AND HACK'S SHOW HORSE: -**

1. Novice Galloway Hack over 14 hands up to & including 15 hands
2. Novice Hack over 15 hands
3. Galloway Hack over 14 hands up to & including 14.2 hands
4. Galloway Hack over 14.2 hand up to & including 15 hands
5. Hack over 15 hands up to and including 15.2 hands
6. Hack over 15.2 hands up to and including 16 hands
7. Hack over 16 hands
8. Lightweight Galloway Hack over 14 hands up to & including 14.2 hands
9. Lightweight Galloway Hack over 14.2 hands up to & including 15 hands
10. Lightweight Hack over 15 hands
11. Medium/Heavyweight Galloway Hack over 14 hands up to & including 14.2 hands
12. Medium/Heavyweight Galloway Hack over 14.2 hands up to & including 15 hands
13. Medium/Heavyweight Hack over 15 hands
14. Lady's Galloway Hack over 14 hands up to & including 14.2 hands
15. Lady's Galloway Hack over 14.2 hands up to & including 15 hands
16. Lady's Hack over 15 hands
17. Gent's Hack over 14 hands
18. Child's Galloway Hack over 14 hands up to and including 15 hands
19. Child's Hack over 15 hands

**Champion & Reserve Galloway over 14 hands up to & including 15hands**

**Champion & Reserve Hack over 15 hands**

20. Rider 18 up to & including 21 years

21. Rider 22 years and Over

**Champion Senior Rider**

**Reserve Champion Senior Rider**

**Off the Track Thoroughbred. Ribbons/sashes/rug sponsored by "OTT"**

22. Rider (any age)
23. Hack over 15 hands up to & including 15.2 hands
24. Hack over 15.2 up to & including 16 hands
25. Hack over 16 hands

**Champion & Reserve OTT Thoroughbred**

**Off the Track Standardbred. Ribbons/sashes/rug sponsored by "OTT"**

26. Rider (any age)
27. Hack over 15 hands up to & including 15.2 hands
28. Hack over 15.2 up to & including 16 hands
29. Hack over 16 hands

**Champion & Reserve OTT Standardbred**



**GALLOWAY AND HACK SHOW HUNTER: -**

30. Novice Show Hunter over 14 hands up to & including 15 hands
31. Novice Show Hunter over 15 hands
32. Galloway Show Hunter over 14 hands up to & including 14.2 hands
33. Galloway Show Hunter over 14.2 hands up to & including 15 hands
34. Show Hunter over 15 hands up to & including 15.2 hands
35. Show Hunter over 15.2 hands up to & including 16 hands
36. Show Hunter over 16 hands
37. Lightweight Show Hunter Galloway over 14 hands up to & including 14.2 hands
38. Lightweight Show Hunter Galloway over 14.2 hands up to & including 15 hands
39. Lightweight Show Hunter over 15 hands
40. Medium/Heavyweight Show Hunter Galloway over 14 hands up to & including 14.2 hands
41. Medium/Heavyweight Show Hunter Galloway over 14.2 hand up to & including 15 hands
42. Medium/Heavyweight Show Hunter over 15 hands
43. Lady's Galloway Show Hunter over 14 hands up to & including 14.2 hands
44. Lady's Galloway Show Hunter over 14.2 hand up to & including 15 hands
45. Lady's Show Hunter over 15 hands
46. Gent's Show Hunter over 14 hands
47. Child's Galloway Show Hunter over 14 hands up to & including 15 hands
48. Child's Show Hunter over 15 hands

**Champion & Reserve Show Hunter Galloway**  
**Champion & Reserve Show Hunter Hack**



**WANNEROO**  
**STOCKFEEDERS**







Entry Form 13<sup>th</sup> October 2018 **Please complete one form per horse/pony** (Please print)

Exhibitor/Owner	Rider
Address	
Email address	
Contact number	
Your Bank Details (In case of cancellation) BSB	Acc. No.
Horse	Height
Height Certificate Expiry Date:     /     / 20     (Official Horses/Ponies/OTT/AHHA only)	
EWA member:     Y / N	SHCWA member:     Y / N     (Please circle)
SVPC member:     Y / N	AHHA member:     Y / N
Riders Age: 4 to 8years / 9 to13 years / 14 to 17 years / 18 years & over     (Please circle)	
Off. Show Horse/Off. Show Hunter/Off. Lead Rein/Encouragement/OTT/AHHA     (Please circle) Are you also competing in the Arab ring ?     Y/N	
<b>Fees</b>	
Early bird discount if entry received by 5pm 20/9/18 <span style="float: right;">(\$10.00)</span>	
Ground fee per horse/pony (SVPC/EWA members pay only \$5.00) <span style="float: right;">\$20.00</span>	
Day membership SVAS <span style="float: right;">\$10.00</span>	
Encouragement Ring <span style="float: right;">\$35.00</span>	
Official Competitors (One rider, one horse) <span style="float: right;">\$43.00</span>	
EWA Levy ( <u>EWA members only</u> ) <span style="float: right;">\$ 7.00</span>	
One rider, riding 2 horses/ponies, \$30.00 per horse/pony, plus \$7.00 levy per horse/pony	
One rider, riding 3 horses/ponies, \$25.00 per horse/pony, plus \$7.00 levy per horse/pony	
Total Paid \$	
<b>Bank Details</b>	
BSB: 923100 Account Number 30499434 Account name: C van Niekerk	
Please use your surname as reference	
Email your entry/ <u>disclaimers</u> /day membership/proof of payment to:	
carovan47@bigpond.com	
Or	

Mail to Caroline van Niekerk, 47 Auger Place, Bullsbrook 6084, WA

Official Use only:	Breast plate number	Date emailed
--------------------	---------------------	--------------



**2018 Day Membership Application**

FULL NAME: \_\_\_\_\_  
ADDRESS: \_\_\_\_\_  
SUBURB: \_\_\_\_\_ POST CODE: \_\_\_\_\_  
EMAIL ADDRESS: \_\_\_\_\_ PHONE NO: \_\_\_\_\_  
DATE OF BIRTH: \_\_\_\_\_

**This membership only covers the rider for the date indicated**

Fee	
Rider	<b>\$10</b>
Date	13 <sup>th</sup> October 2018

In consideration of the Swan View Agricultural Society (hereinafter called "The Society") accepting my child/myself as a day member (hereinafter called "The Member") I understand that I am not entitled to full rights of a normal Member. I acknowledge that my membership only covers my child/myself for the purposes of insurance as per a normal member of the club and does not entitle me to discount entry fees (payment of non-member fees will apply) or other entitlements as a Society member.

I, the undersigned agree to the member attending and participating in all Society activities and agree to and do indemnify The Society, its' officers and officials from and against any damages, compensation claims or demands arising out of any accident, disease or illness which may befall or occur to the member during the members participation in any Society activity or function connected with The Society or when travelling to or from such activity or function. I further authorize any officers of The Society in the event of such accident, injury, disease or illness to obtain the necessary medical assistance or treatment and for this purpose engage in any medical, ambulance and nursing assistance and/or hospital treatment and in this event, I agree to pay all such fees and expenses, these said fees to be paid to The Society on demand. I hereby agree to my child/myself applying for day membership of the Swan View Agricultural Society and I/we agree to abide by their rules and regulations, and indemnity as listed above.

In the event of an emergency, the following person can be contacted:

Name: \_\_\_\_\_  
Phone no: \_\_\_\_\_  
Allergies/Disabilities: \_\_\_\_\_  
Medications: \_\_\_\_\_  
Signature: \_\_\_\_\_  
Date: \_\_\_\_\_

Office use only	
Receipt no	
Member no	
Forwarded to The Treasurer, Swan View Agricultural Society: Date	Email/mailed



**Owner/Exhibitor**  
**Disclaimer Statement**

I, .....ACKNOWLEDGE AND AGREE AS A CONDITION OF PARTICIPATING that neither the Swan view Agricultural Society, nor its' agents, officials, volunteers, medical personnel, nor any persons, promoters, sponsors, advertisers, owners and lessees of premises used to conduct the EVENT shall be under any liability for my death or any bodily injury, loss or damage which may be sustained or incurred by me, as a result of participation in or being present at the EVENT, except in regard to any rights I may have arising under the Trade Practices Act 1974.

I acknowledge that equestrian activities are dangerous and that accidents causing death, bodily injury, disability and property damage can, and do happen.

In the event of an outbreak of Equine Influenza and subsequent lockdown

I,.....am responsible for the care and wellbeing of my horses/ponies. I agree to comply with the DPI regulations and am responsible for any costs incurred.

BY SIGNING HEREUNDER I CONFIRM HAVING READ AND UNDERSTOOD THE CONTENTS OF THIS DISCLAIMER.

SIGNATURE.....DATE.....

If the participant is UNDER 18 years of age, PARENT or GUARDIAN MUST SIGN this disclaimer.

Name of child.....Date of birth.....



**Rider**

**Disclaimer Statement (to be completed if not owner/exhibitor)**

I, .....ACKNOWLEDGE AND AGREE AS A CONDITION OF PARTICIPATING that neither the Swan view Agricultural Society, nor its' agents, officials, volunteers, medical personnel, nor any persons, promoters, sponsors, advertisers, owners and lessees of premises used to conduct the EVENT shall be under any liability for my death or any bodily injury, loss or damage which may be sustained or incurred by me, as a result of participation in or being present at the EVENT, except in regard to any rights I may have arising under the Trade Practices Act 1974.

I acknowledge that equestrian activities are dangerous and that accidents causing death, bodily injury, disability and property damage can, and do happen.

In the event of an outbreak of Equine Influenza and subsequent lockdown

I,.....am responsible for the care and wellbeing of my horses/ponies. I agree to comply with the DPI regulations and am responsible for any costs incurred.

BY SIGNING HEREUNDER I CONFIRM HAVING READ AND UNDERSTOOD THE CONTENTS OF THIS DISCLAIMER.

SIGNATURE.....DATE.....

If the participant is UNDER 18 years of age, PARENT or GUARDIAN MUST SIGN this disclaimer.

Name of child.....Date of birth.....





## Conditions of entry

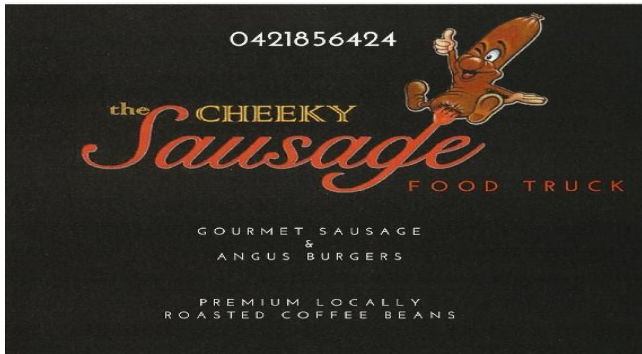
- In the event of extreme weather (40°C plus) the organizers will cancel the event and full refunds will be given
- The Committee of the Swan View Agricultural society reserves the right to cancel, alter or combine any classes they may deem necessary on the day
- Competitors must wear an approved safety helmet in all rings and warm up areas
- **No prize money will be awarded unless sponsored**
- Stallions are **not** permitted to compete in the hack rings
- Official Horse/ponies may only compete in Show Horse **or** Show Hunter, not both.
- A Novice horse/pony is considered to be any horse/pony that has not won 3 or more first places at an official fixture
- Official competitors must have original horse registration papers, height certificates, membership cards available on the day.
- All competitors under the age of 18 must be accompanied by an adult to be eligible to compete.
- Riders age is taken from the day of competition
- **Disclaimer statements must be completed by Owner/Exhibitor and rider if the rider is not the owner/exhibitor**
- All competitors must be a member of either EWA, or SHCWA for insurance purposes to compete/ride on the grounds **or** become day members of Swan View Ag Soc.
- The Swan View Agricultural Society committee and its' agents, representatives, promoters and organizers do not accept any liability due to accident, loss, damage to property, injury or illness to horses, riders, spectators or any other person whatsoever.
- The Judges' decision is final. Protests must be received within 30 minutes of the conclusion of the event, in writing with a \$50 fee to be refunded only if the protest is upheld.
- **No dogs allowed**

\*\*\*\*\*

## General notes.

- Yards are free of charge, however please leave them clean and tidy
- Bins for manure will be provided, please use them.
- Please stow gear and lock your vehicle
- Competitor numbers will be issued prior to the show either by email or snail mail.
- The organizers postal address is 'country'. Please allow for delays.
- **If there is a change of rider on the day, that rider or parent/guardian must sign a disclaimer statement – these will be available from the club rooms veranda**

Please support your sponsors



The Gordon Family



# Off the Track

Supporting Western Australian Retired Racehorses

## Fly n High

"Sewing your dreams into reality"

**T: 9571 2662**  
**M: 0437 316 149**

**Michelle Walther**

100 Meadowbrook Ramble  
Bullsbrook Perth WA 6084

Email: waltherfamily1@bigpond.com  
Web: flynhighhorsewear.com.au



**MIDLAND**



**Ellenbrook**



**Angela Davison**

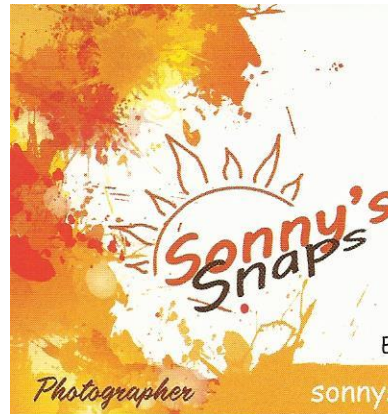
Qualified Medical Herbalist  
Equine Herbal Specialist  
Member, A.T.M.S

■ angela@thehorseherbalist.com  
■ www.thehorseherbalist.com

*Your Horse's Health is Our Business!*

**Sonny Rutherford**

PO Box 286  
Northam WA 6401



**0409 268 198**

Facebook: Sonny's Snaps  
Email: sonnyph@bigpond.com

Photographer

sonnyssnaps.smugmug.com

**REPAIRED & SERVICED BY:**



**M: 0408 989 354**

*The Stockfeed Specialists*  
**BRIGADOON**  
*produce*



2395 Great Northern Hwy  
Bullsbrook 6084 WA  
PO Box 313  
Bullsbrook 6084 WA

For all your pet & stock needs

- animal health products
- kleenheat gas

Email: bullsbrookproduce@bigpond.com

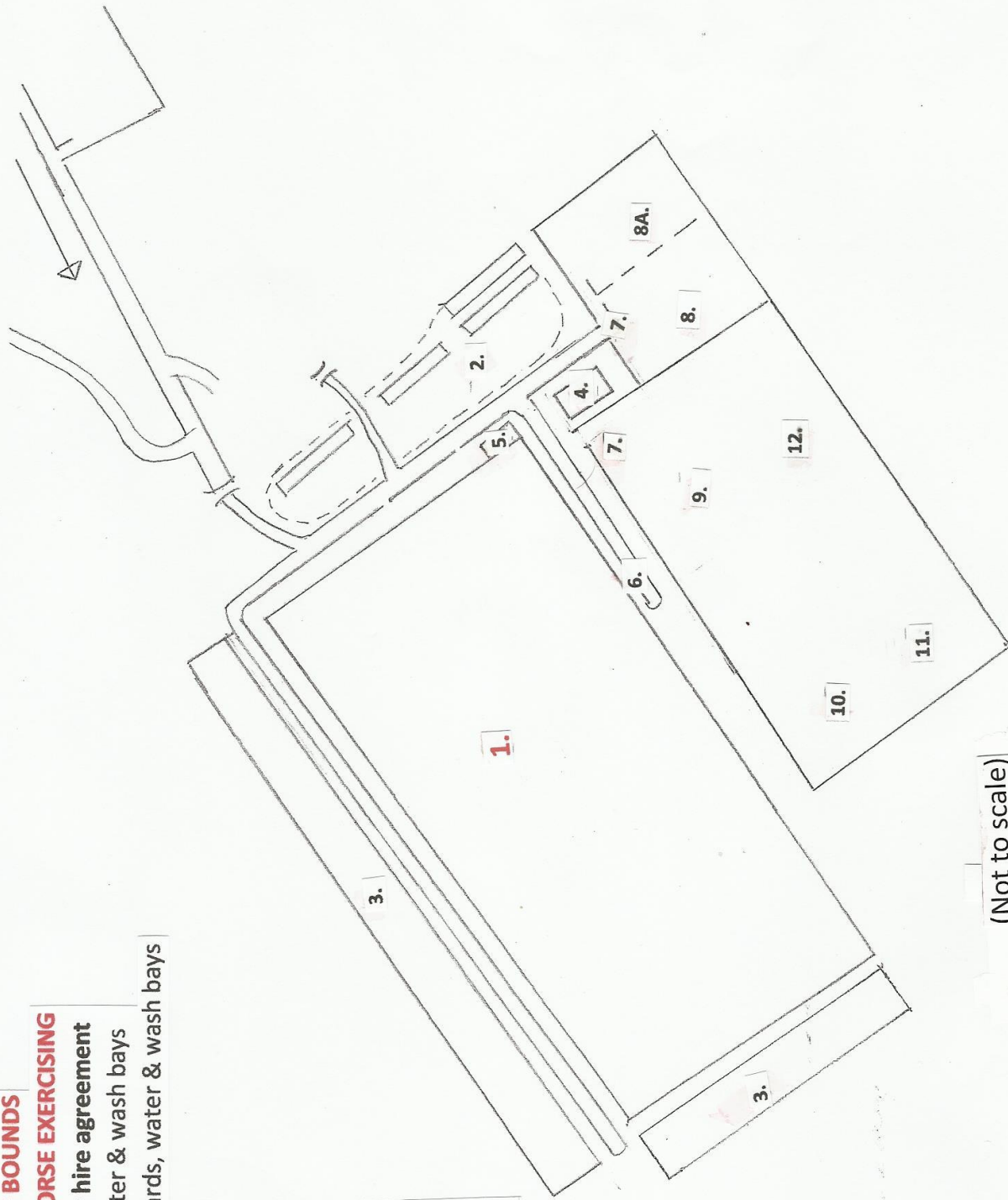
**TGA**  
**PALLETS**

Email: enquiries@tgapallets.com.au

**1. POLX FIELDS ARE OUT OF BOUNDS**  
**NO HORSE FLOATS OR HORSE EXERCISING**

**This will compromise our hire agreement**

2. Float parking & yards, water & wash bays
3. Overflow float parking, yards, water & wash bays
4. Club rooms (raffle)
5. Toilets
6. Food van
7. Entry/exit gates to rings
8. Encouragement ring
- 8A. Enc. Ring warm up
9. Warm up area
10. Official hacks
11. Official ponies
12. Arab ring



(Not to scale)